

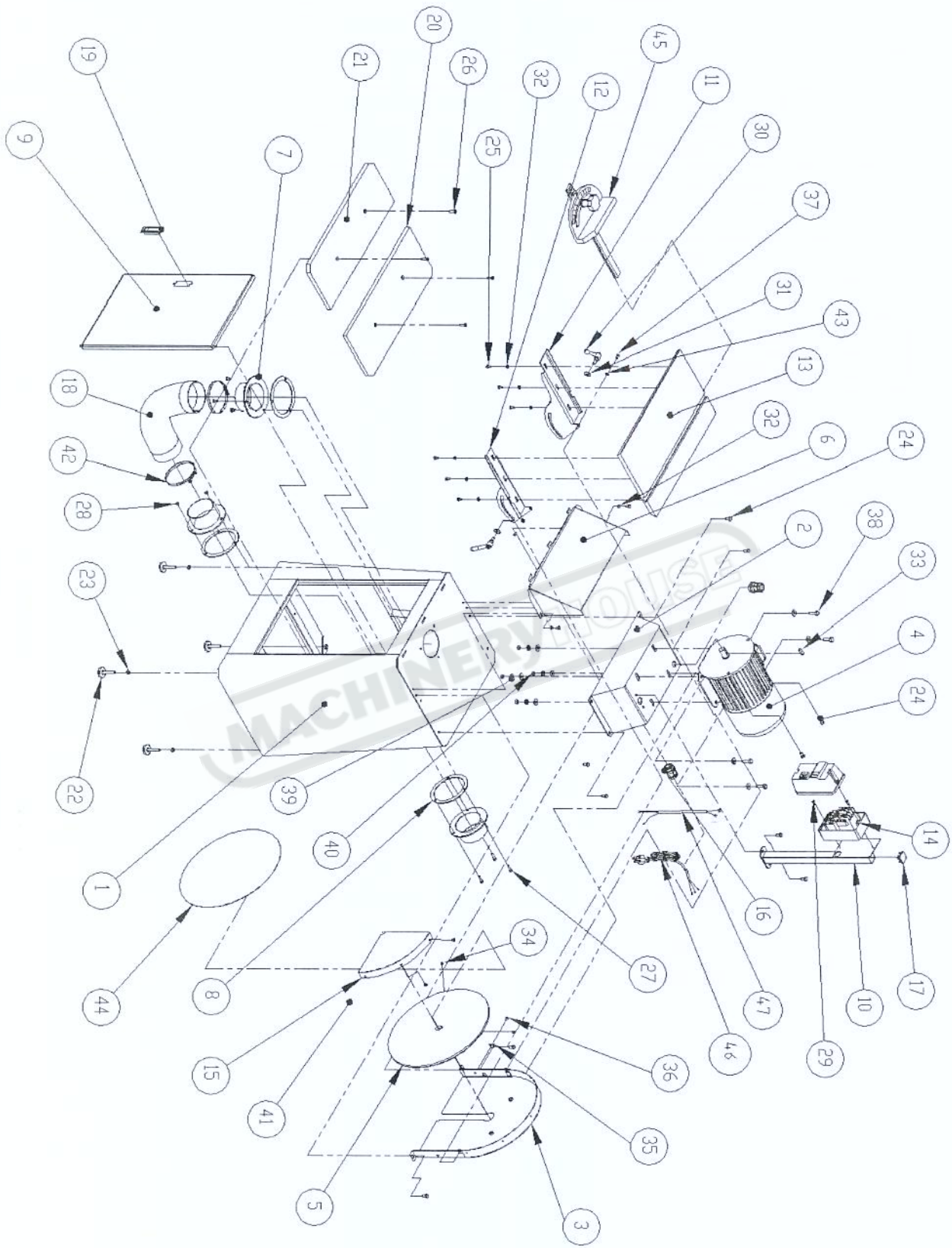
## PARTS LIST

PART NO	DESCRIPTION	SPECIFICATION	Q'TY
1	Base		1
2	Motor Base		1
3	Disc Cover		1
4	Motor	2HP	1
5	Disc	15"Cast Iron	1
6	Dust Hood Cover		1
7	Dust Port	4"	3
8	Foam	4"	3
9	Base Door		1
10	Switch Base		1
11	Right Tilting Turning		1
12	Left Tilting Turning		1
13	Cast Iron Table	508*307*15mmCast Iron	1
14	Switch Box		1
15	Safety Guard		1
16	Conduit Connector	PG13.5-08	2
17	Bung	32*32mm	1
18	Flexible Hose	4"	1
19	Lock		1
20	Wood Board	15*530*214.5mm	1
21	Wood Board	15*530*200.5mm	1
22	Screw-Mat	3/8*2"	4
23	Nut	3/8"	4
24	Hex Head Screw	M8*16	10
25	Hex Head Screw	M6*12	11
26	Flat Head Screw	M6*20	4
27	Cap Screw	M6*30	3
28	Nut	M6	3
29	Philips Head Screw	M4*12	2
30	Handle	M8*16	2
31	Washer	M8*18	2
32	Washer	1/4"	11
33	Key	7*7*25	1
34	Set Screw	M8*10	2

## PARTS LIST

PART NO	DESCRIPTION	SPECIFICATION	Q'TY
35	Pointer		1
36	Philips Head Screw	M5*5	1
37	Philips Head Screw	M6*10	2
38	Hex Head Screw	M8*25	4
39	Washer	M8*18	16
40	Nut	M8	4
41	Philips Head Screw	M5*5	3
42	Tie	4"	3
43	Lock Washer	M6	2
44	Sanding Paper	15"#80	1
45	Miter Gauge		1
46	Power Cord		1
47	Motor Cord		1

MACHINERYHOUSE



## ORDERING REPLACEMENT PARTS

Replacement parts may be ordered from your local distributor. When ordering replacement parts, always provide the following information :

1. The model number and serial number of the 15" disc sander.
2. The parts number.
3. The parts name.
4. The desired quantity of the part.

## TROUBLE SHOOTING

TROUBLE	PROBABLE CAUSE	CORRECTION
Motor does not run when power switch is pressed "ON"	<ol style="list-style-type: none"> <li>1. Switch is burnt out.</li> <li>2. Connection wire is loose or damaged.</li> </ol>	<ol style="list-style-type: none"> <li>1. Replace the switch.</li> <li>2. Tighten wire or replace wire.</li> </ol>
Motor does not run at full speed.	<ol style="list-style-type: none"> <li>1. Power voltage is too low.</li> <li>2. Motor is damaged.</li> </ol>	<ol style="list-style-type: none"> <li>1. Test voltage.</li> <li>2. Check and repair motor</li> </ol>
Motor does not reach full power.	<ol style="list-style-type: none"> <li>1. Incorrect power wiring.</li> <li>2. Overloaded.</li> </ol>	<ol style="list-style-type: none"> <li>1. Replace with the correct size of the power wiring.</li> <li>2. Reduce load.</li> </ol>
Motor overheating	<ol style="list-style-type: none"> <li>1. Motor voltage is different</li> <li>2. Motor is damaged</li> </ol>	<ol style="list-style-type: none"> <li>1. Check the voltage label</li> <li>2. Check and repair motor</li> </ol>